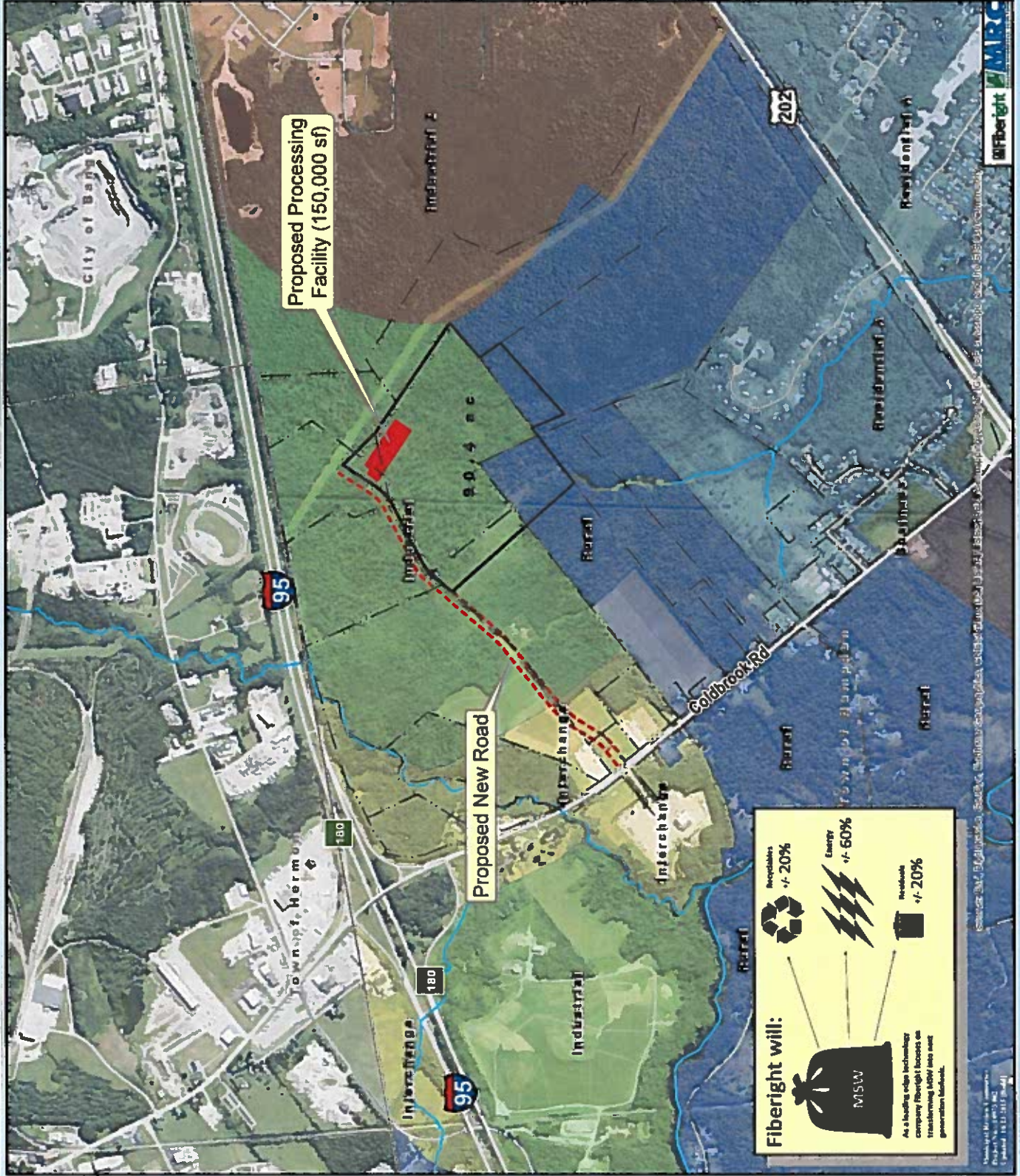
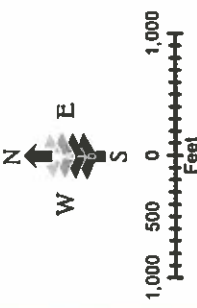


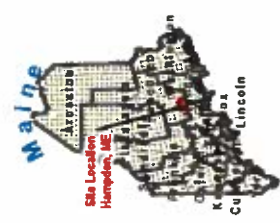
# MRC Preliminary Location



Project No. 18-001 MRC  
 Prepared 10/11/2018 (final)



- Legend**
- Property Lines
  - Right of Way
  - Proposed Building Location
  - Proposed New Road
  - Town Boundaries
  - Sewer District
  - Business
  - Commercial Service
  - Industrial 1
  - Industrial 2
  - Interchange
  - Residential A
  - Rural



- MAP NOTES:**
1. SITE DATA DEVELOPED BY CES, INC. IN DECEMBER 2018.
  2. ELEVATION DATA COURTESY OF MAINE OFFICE OF GIS (MEGIS).
  3. PARCEL AND ZONING DATA COURTESY OF THE TOWN OF HAMPTON.
  4. BASE MAPPING LAYERS ARE SERVER-BASED IMAGERY, TOPOGRAPHIC IMAGES, AND VECTOR DATA COURTESY OF CES. ACQUIRED OCT. 2014.
  5. MAP IS PROJECTED USING THE UNIVERSAL TRANSVERSE MERCATOR (UTM) PROJECTION, ZONE 18 NORTH (AMERICAN DATUM OF 1983 (NAD83)).
  6. GRID NORTH ARROW IS REFERENCED TO GRID NORTH.
  7. INTENDED FOR REFERENCE PURPOSES ONLY. THE MRC & CES, INC. AND THEIR AFFILIATES ARE NOT RESPONSIBLE FOR THE MISUSE OF THIS MAP OR DATA DEPICTED HEREIN.

**Fiberight will:**

- Recyclables +/- 20%
- Energy +/- 60%
- Residuals +/- 20%
- MSW

As a leading edge technology company Fiberight focuses on transforming MSW into zero generation Residuals.

